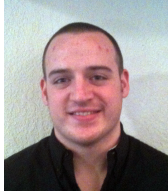


**Craig  
Shearmire**

***Project Engineer***



Craig has worked with Brockamp & Jaeger, Inc. as an intern and joined the firm upon his graduation from Oregon State University with a degree in Construction Engineering and Management in early 2011. Craig has experience in estimating projects, bidding, processing submittals, maintaining logs and purchasing material, as well as on-site experience as a concrete technician and general laborer.

**2011 - present**

Project Engineer: Brockamp & Jaeger, Inc.

- Provides support for project managers and owner
- Provides construction bid assistance
- Participates in job meetings
- Processes contract, bid documents and submittal packages
- Processes and tracks RFIs, COPs, and COs
- Collects and tracks operations and maintenance information to complete and close packages
- Implements and tracks safety planning
- Member of Safety Committee

**Projects**

Craig's projects for Brockamp & Jaeger include:

- Adventist Medical Center Projects  
Remodels and upgrades for Spinal Surgery Suite, NW Regional Heart Center, Oncology Vault and various outpatient clinic suites
- Gates Rural Fire Protection District New Fire Hall  
\$1.7 million, 7,900 square foot new fire hall  
LEED Platinum Level Certified project
- Gladstone High School, Gladstone School District  
\$14.4 million renovation of existing school and construction of new Applied Technology & Science Center;  
LEED Gold Level Certified Project
- Gladstone Center for Children & Families  
\$4.9 million conversion of grocery store to early childhood center;

**Summer 2010**

Assistant Project Engineer: Slayden Construction Group

**Summer 2009**

Concrete Technician

**06/08 -01/09**

Assistant Project Engineer: Brockamp & Jaeger, Inc.

**Education**

B.S. in Construction Engineering & Management, Oregon State University, March 2011

**References**

Erik Brahmer, Slayden Construction Group: (503) 949-0740  
Carol Goss, Soderstrom Architects: (503) 228-5617